

Conext Control

Your solution for control and monitoring of large commercial rooftops and PV power plants

Conext™ Control is a solution that integrates control, monitoring and performance management features and is designed to operate any site efficiently, providing the means to make prompt decisions and react accordingly. It can easily be adapted to your required level of service, from maintenance contracts with a simplified monitoring system, to performance contracts with a fast and comprehensive system covering the entire life cycle of your installation.

Why choose Conext Control?



True bankability

- Warranty from a trusted partner with over 177 years of experience
- World leader in automation, SCADA and process control in diverse industries
- Strong service infrastructure worldwide to support your global needs



Higher return on investment

- CAPEX and feature level adapted to any need
- Minimizes OPEX through real time supervision and advanced diagnostics
- Asset performance tracking tools enabling enhancement of energy harvest
- Contributes to extend equipment life duration



Designed for reliability

- Robust hardware design through rigorous Custom Reliability Testing
- Software application validated through extensive qualification testing



Flexible

- Various features levels (Advanced HD, Advanced, Initial) to meet any customer requirements
- Modular hardware and software based on standardized bricks
- Complete multi-site solution including data acquisition, remote control, grid interaction management, supervision, data storage and analysis
- Wide selection of devices for easy and speedy site implementation



Easy to service

- Embedded Conext Control self diagnostics tool
- Smart alarming management based on plant-wide time synchronization
- Hardware and software components shared with several Schneider Electric global business



Easy to install

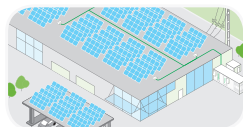
- Based on tested and validated monitoring and control system architectures, removing needs for customization
- System configuration tool enables fast and error-free site configuration and implementation



Product applications



PV power plants centralised



Commercial grid-tie centralised

Conext Control		Advanced HD	Advanced	Initial
Conext Control				
	Intelligence	•	•	•
	Reports	•	•	•
	Performance	•	•	•
	Smart string monitoring	• (option)	• (option)	
	Production Forecast	• (on demand)	• (on demand)	• (on demand)
	DC performance evolution tracking	• (on demand)		
Conext Control intelligence				
Multi-site management				
		•	•	•
Data behaviors				
	Acquisition cycle	• (2 seconds)	• (2 seconds)	• (5 seconds)
	Time synchronization	•	•	•
	String failure detection	•		
	Sub-array failure detection		•	•
	1" data averaging	•	•	•
	1" data and alarm timestamping	•	•	•
	1" data and alarm storage	• (up to 40 days)	• (up to 40 days)	• (up to 10 days)
	Communication status	•	•	•
Operator interface				
	Client server access	•	•	•
	Web access	•	•	•
Real time synoptic views				
	Predefined	•	•	•
	Customized	• (on demand)	• (on demand)	
Alarming				
	Real time alarming	•	•	•
	Alarm filtering (root cause display)	•	•	•
Alerting				
	SMS or e-mail	•	•	•
Conext Control reports				
	Predefined	•	•	•
	Customized	• (on demand)	• (on demand)	
	Site scorecard	•	•	•
	Trend analysis	•	•	•
Conext Control performance				
Key performance indicators PR, AL, energy not supplied				
		•	•	•
Long term storage				
	SQL database	• (up to 20 years)	• (up to 20 years)	• (up to 20 years)
Optional interface				
	OPC, AE, OPC DA, HDA, OPC HDA	• (on demand)	• (on demand)	• (on demand)
Controlled features				
PV Box				
	Inverter remote control	•	•	•
	Inverter (P, Q) fast control	• (if installed)	• (if installed)	• (if installed)
Array Box				
	Main switch remote control (LTO)	• (if installed)		
Grid Box				
	Grid coupling breaker remote control	•	•	•
	RMU remote control	•	•	•
	Coupling / uncoupling management	•	•	•
	Grid operator interface	• (if installed)	• (if installed)	• (if installed)
	Plant controller	• (on demand)	• (on demand)	• (on demand)
Monitored devices				
PV Box				
	Inverters	•	•	•
	Transformer (fault)	•	•	•
	Transformer (pre-alarm)	•	•	
	RMU status	•	•	
	RMU protection relay	•	•	•
	LV switchboard	•	•	
	Auxiliary consumption metering	• (if installed)	• (if installed)	
	Energy reserve	• (if installed)	• (if installed)	
	Weather sensors	• (if installed)	• (if installed)	
	Safety sensors	• (if installed)	• (if installed)	
	Sub-array current acquisition		•	•
Array Box				
	String current acquisition	•		
	Plane-of-array pyranometer	• (if installed)		
	Back-of-module temperature	• (if installed)		
	Electrical devices status	•		
Grid Box				
	Grid coupling breaker status	•	•	•
	Revenue grade metering	•	•	•
	Feeders status	•	•	•
	Feeders protection relays	•	•	•
	LV switchboard	•	•	•
	Energy reserve	• (if installed)	• (if installed)	• (if installed)
	Weather station	• (if installed)	• (if installed)	• (if installed)
	Safety sensors acquisition	• (if installed)	• (if installed)	• (if installed)

Specifications are subject to change without notice.