

# Conext Monitor 20 communication device

## Compact and easy to use remote monitoring solution for residential PV installations

Conext™ Monitor 20 is a compact monitoring and control unit. This data logger allows simple configuration and operation. Connecting the data logger to the internet via Ethernet allows the operating data to be visualized and monitored regardless of location using the web portal. The key data displayed in the web portal includes current and historical energy generation, environmental impact, and system set-up data.

With four digital inputs and a power control function, it also meets the grid feed-in management requirements by allowing the connection of a ripple control receiver to the inverter through the data logger.

Conext Monitor 20 is suitable for Conext RL and Conext TL series of inverters for PV systems up to 20 kW (not more than three inverters).

### Why choose Conext Monitor 20?



#### True bankability

- Warranty from a trusted partner with over 177 years of experience
- World leader in industrial power drives, UPS, and electrical distribution
- Strong service infrastructure worldwide to support your global needs



#### Higher return on investment

- Energy generation charts and regional benchmarking to proactively address PV plant performance issues, if any
- Meets current grid feed-in management guidelines to avoid any blanket reduction e.g. in Germany



#### Designed for reliability

- Undergone extensive safety, quality, and reliability testing



#### Flexible

- Compatible with Conext RL and TL series of inverters
- Access to PV plant performance regardless of location
- Both visual and audible alarm available for quick error reporting



#### Easy to service

- Provision to backup and to load data logger configuration
- Easy replacement of data logger without losing any portal data

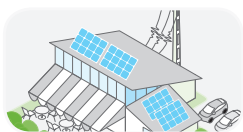


#### Easy to install

- Compact unit that is very easy to mount
- Configuration software included for installation assistance
- Simple registration process for web portal



### Product applications



Commercial grid-tie decentralised




Residential grid-tie

<b>Device short name</b>	<b>Conext Monitor 20</b>
<b>Electrical specifications</b>	
<b>Communication interfaces</b>	
Inverter (Modbus RS 485)	Connector: 1x RJ12, 2-wire serial, termination: 120 Ohms Inverter connect cable (length: 2 m / 6.56 ft) and RJ45 - RJ45 adapter for extension provided Products supported: Conext RL, Conext TL (max. plant size 20 kW, max. number of inverters: 3)
Ethernet	Connector: 1 x RJ45, 10 Mbps (HTTP(s), DHCP, REST) Ethernet connect cable provided (length: 1 m / 3.28 ft)
USB-device	Connector: USB-MicroTypeB, full speed 12 Mbps, protocols: CDC, RS232 emulation USB connect cable provided (length: 1.8 m / 5.91 ft)
<b>Other interfaces</b>	
Ripple control receiver	Connector: 1x RJ45, 4x digital inputs (EN62053-31)
<b>Power supply options</b>	
DC input	24 V +/- 5% , using 2.1 x 5.5 mm (0.08 x 0.22 in) center positive socket
AC frequency of power adapter	47 - 63 Hz
AC voltage of power adapter	100 - 240 VAC
Power consumption	1.7 W typical
<b>Memory</b>	
Internal flash	5 days data
<b>General specifications</b>	
Product weight	0.2 kg (0.4 lb)
Shipping weight	0.7 kg (1.5 lb)
Product dimensions (H x W x D)	10.7 x 15.2 x 3.7 cm (4.2 x 6.0 x 1.5 in)
Shipping dimensions (H x W x D)	16.0 x 33.2 x 12.2 cm (6.3 x 13.1 x 4.8 in)
Housing/mounting system	ABS PA-765A / Wall-mount: 2-screw
IP rating/mounting location	IP 21 / indoor only
Status display	8x Light Emitting Diodes (LEDs)
Push buttons	3x (menu, action and reset)
Switch	1x (for power control on/off)
Audible alarm	Yes (with on/off control)
Temperature	Operating: 0°C to 40°C (32°F to 104°F); Storage: -20°C to 65°C (-4°F to 149°F)
Relative humidity	20 to 90% (non-condensing)
Part number	PVSCMC1120
<b>Features and options</b>	
Warranty	2 years
Portal compatibility with browsers	IE8 and above, Firefox 13.0.1 and above, Google Chrome 20.0.1132.47m and above, Apple Safari 5.1.7 and above
<b>Regulatory approvals</b>	
Marking	CE, RCM
Safety	EN 60950-1
EMC immunity	EN61000-6-2, EN61000-4-11
EMC emission	EN55022 Class B, EN 61000-3-2, EN61000-3-3
Substances/environmental	RoHS

Specifications are subject to change without notice.


**Conext Monitor 20 works with the following Schneider Electric products**

**Conext TL**



8000 E Product no. PVSNVC8000  
10000 E Product no. PVSNVC10000  
15000 E Product no. PVSNVC15000  
20000 E Product no. PVSNVC20000

**Conext RL**



3000 E Product no. PVSNVC3000 / PVSNVC3000S  
4000 E Product no. PVSNVC4000 / PVSNVC4000S  
5000 E Product no. PVSNVC5000 / PVSNVC5000S