

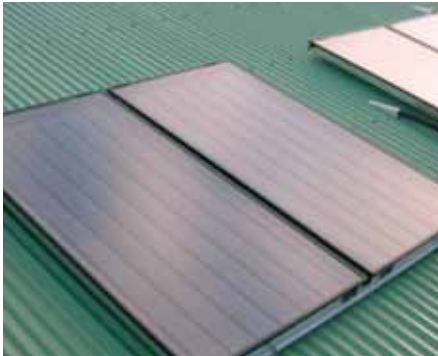
Solar Collectors

SR XL
SR TH



Sun Ray's Panels

High Reliability and Efficiency



SUN RAY's solar collectors are the result of our latest research. Available in XL (Black Master) & TH (Thermo-hybrid), they absorb the energy of the sun to heat the water.

Extremely resistant to bad weather with its aluminium casing, the collector is sealed with EPDM seal for longer life. The circulation grid and the black absorber ensure that a 180 °C stagnation temperature be reached.

The high selective absorbers minimize the reflection of solar radiation. Polyester wool is used to insulate the panels (40 mm) and improves heating capacity and reduces night time heat loss.

An extremely strong 3.2mm solar tempered glass seals the panels. This glass has been tested for hail resistance. The glass, which is low in iron oxide allows for higher performance.

The SR XL panels are specially manufactured for areas with high solar radiation, thus offering the best value for money and allowing more people to benefit from this renewable energy.

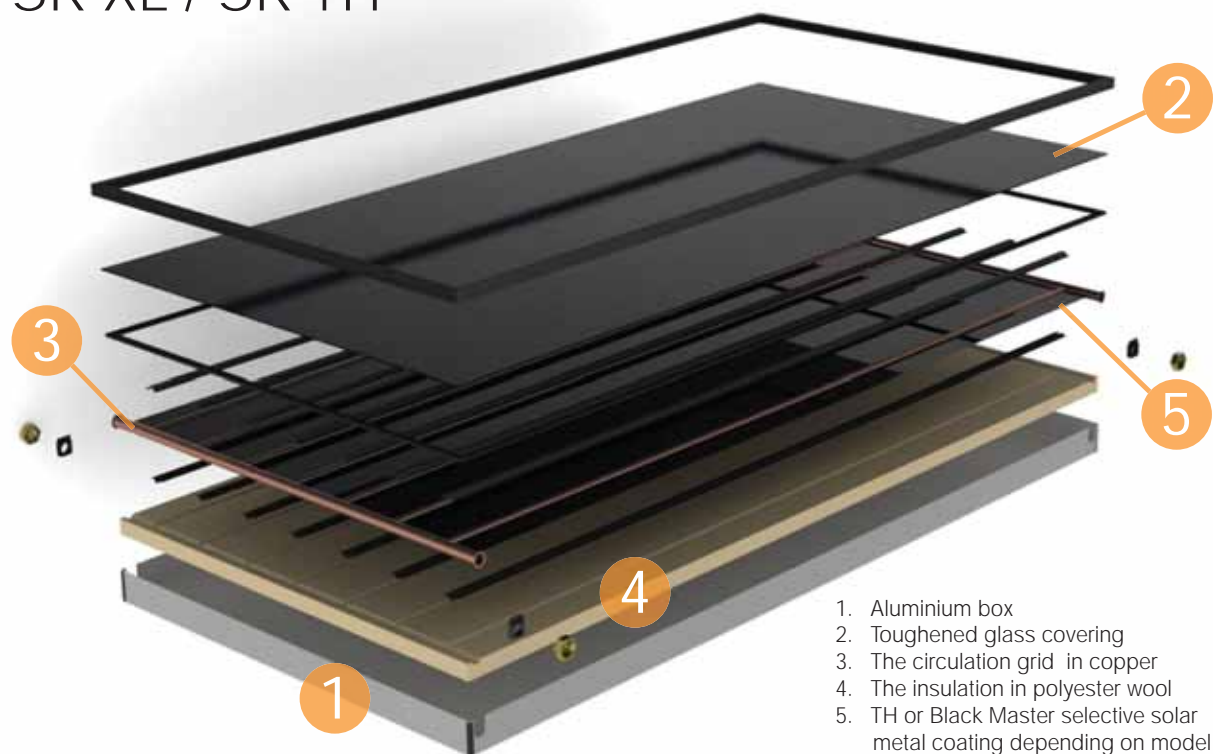
The SR TH panel differentiates itself by a higher efficiency and faster heating up time. The SR TH panel is 10 to 15% more efficient in comparison with similar products on the market. The coating is highly selective which increases the system's energy performance up to 18 %.

The main strengths of the panels are:

- The Aluminium sheet of coating permits a 95% solar absorption.
- Efficient insulation provides low energy loss.
- An intuitive installation due to simple connections and instructions
- Frames permitting installation on most roofs' inclinations (0° to 30°).
- The high quality materials used in manufacturing the collectors make them very resistant to corrosion.
- 10 year warranty on Panels (as standard).
- Tin or tile roofs aluminium anodized cyclone proof frames (as standard) which enables rain run-off, reduces leaf blockages and provides wind and air circulation. This implies a longer lifespan of the system with minimum maintenance. This frame is also a key feature in making the systems cyclone proof.
- All the screws fixing the frames and the panels are in marine grade stainless steel.

Technical Data Sheet

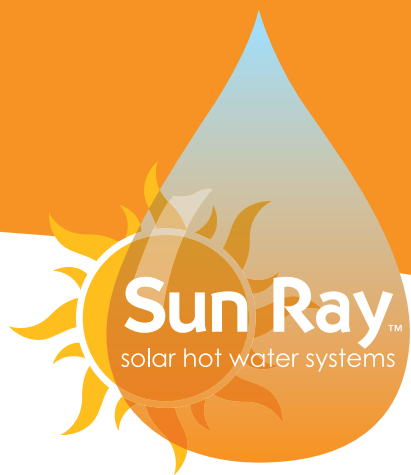
SR XL / SR TH



1. Aluminium box
2. Toughened glass covering
3. The circulation grid in copper
4. The insulation in polyester wool
5. TH or Black Master selective solar metal coating depending on model



TYPE	SR XL	SR TH
Gross area m ²	2.00	2.00
Aperture area m ²	1.91	1.91
Max operation pressure bars	7	7
Weight (Empty) Kg	30	30
Absorber's water capacity dm ³	1.93	1.93
Dimension mm	1964 x 1004 x 80	1964 x 1004 x 80



Contact us to become a dealer

Your representative office:

SUN RAY Headquarters

P +687 284 208

F +686 281 281

E export@sun-ray.fr

9 rue Isaac Newton

BP 4006-98846 Nouméa

New Caledonia FRANCE

www.sun-ray.fr

